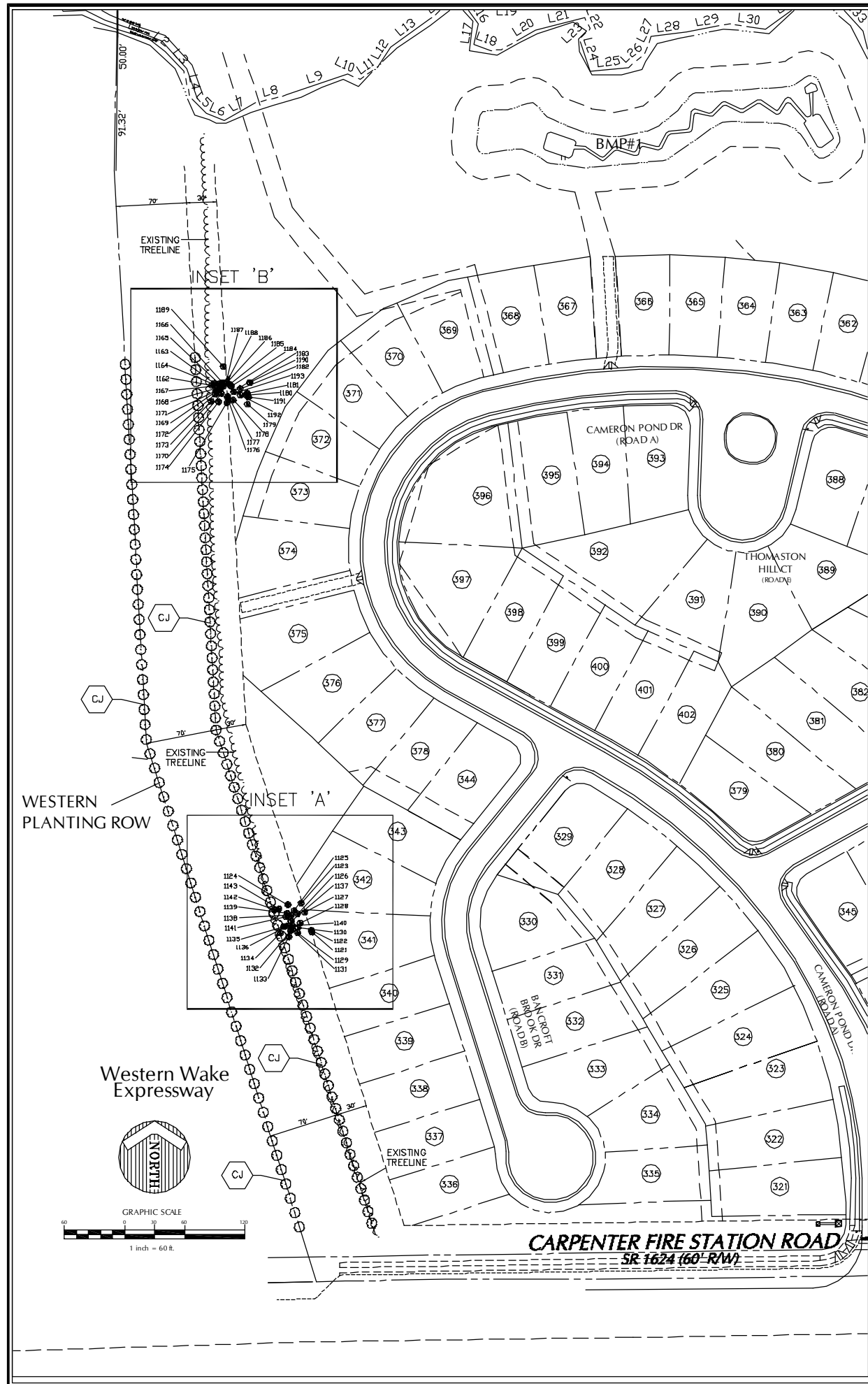


K:\Projects\2008\1624\1624-Subarea Final (No Zoning Comp)\DWG\Tree Survey\Tree Survey.dwg, October 02, 2008 1:27:53 PM - JASON BERTON/CAD

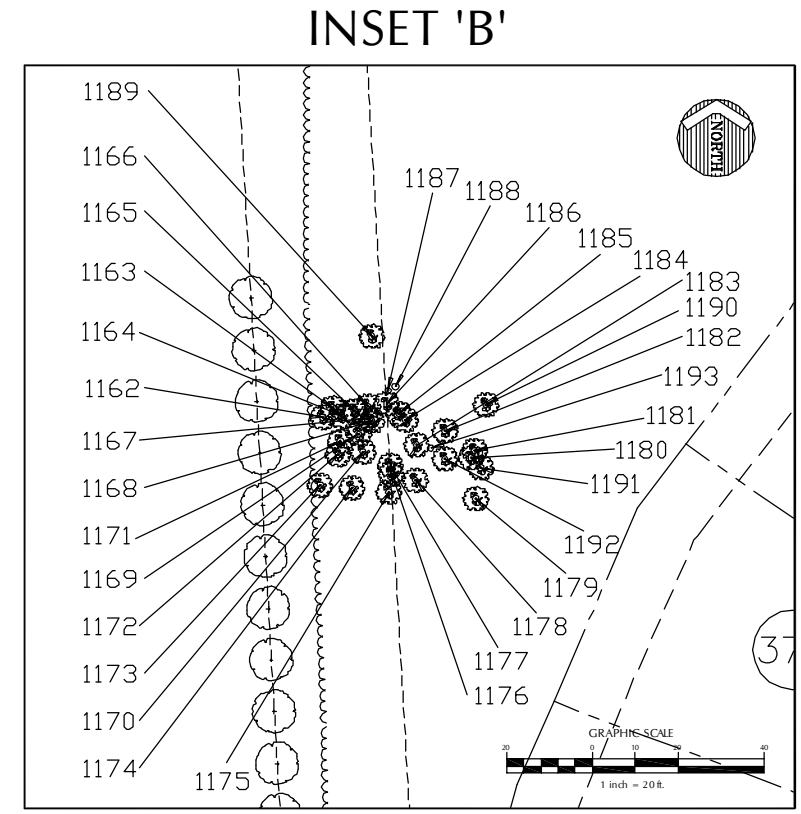
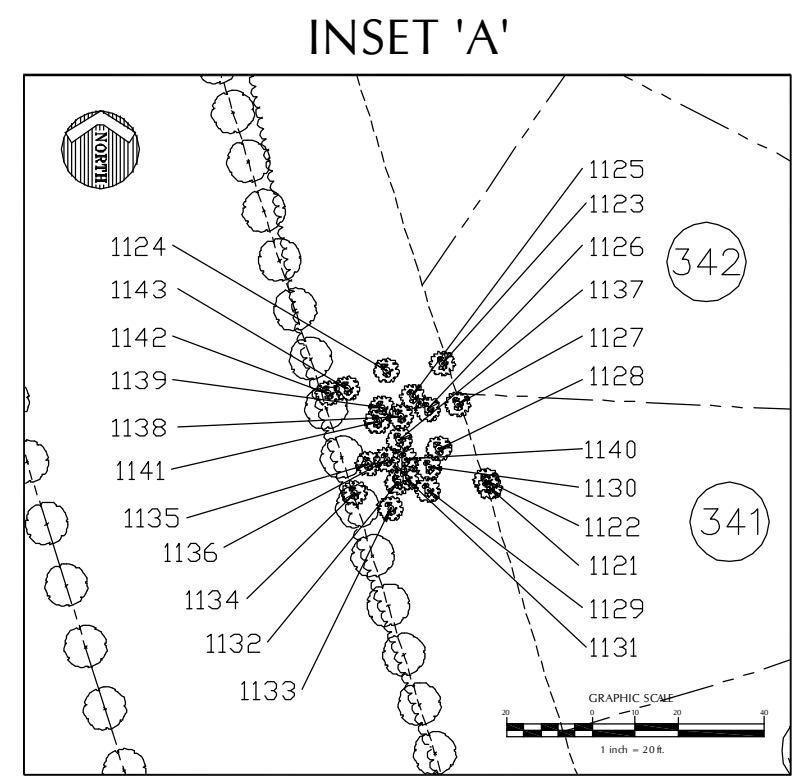


THOROUGHFARE BUFFER - EXISTING TREE SCHEDULE

INSET 'A'		
NUMBER	TYPE	DBH
1121	PINE	3"
1122	PINE	3"
1123	PINE	3"
1124	PINE	4"
1125	PINE	5"
1126	PINE	4"
1127	PINE	2"
1128	MAPLE	3"
1129	PINE	5"
1130	OAK	2"
1131	PINE	3"
1132	PINE	4"
1133	PINE	4"
1134	POPLAR	2"
1135	PINE	2"
1136	POPLAR	2"
1137	POPLAR	2"
1138	POPLAR	2"
1139	SWEET GUM	2"
1140	PINE	3"
1141	PINE	3"
1142	SWEET GUM	3"
1143	SWEET GUM	2"

INSET 'B'		
NUMBER	TYPE	DBH
1162	OAK	2"
1163	SWEET GUM	3"
1164	POPLAR	3"
1165	PINE	3"
1166	PINE	3"
1167	PINE	4"
1168	PINE	4"
1169	PINE	4"
1170	PINE	4"
1171	PINE	2"
1172	POPLAR	2"
1173	POPLAR	4"
1174	PINE	4"
1175	PINE	3"
1176	POPLAR	2"
1177	POPLAR	2"
1178	PINE	4"
1179	MAPLE	4"
1180	POPLAR	2"
1181	PINE	4"
1182	PINE	3"
1183	POPLAR	3"
1184	PINE	4"
1185	PINE	3"
1186	PINE	3"
1187	PINE	3"
1188	PINE	3"
1189	PINE	4"
1190	POPLAR	2"
1191	POPLAR	2"
1192	POPLAR	2"
1193	POPLAR	2"

NOTE:
 Prior to installation of the Cryptomeria survey stakes be placed in the field to ensure that a tree is placed in the "bare spot" behind 2715 Cameron Pond Drive and that a gap is left for the private pedestrian easement between lots 374 to 375. This note not intended to add additional plantings beyond those specified on the plan.



ToC Project # 03-SB-006B
 APPROVED
 TOWN OF CARY
 Approved by _____ Date _____
 Planning _____ Date _____
 Engineering _____ Date _____

PRELIMINARY
 NOT APPROVED FOR CONSTRUCTION

WITHERS & RAVENEL
 ENGINEERS | PLANNERS | SURVEYORS
 111 Matthews Drive, Cary, North Carolina 27511 | 919-488-5500 | Fax: 919-487-6008 | www.wit-rav.com

TREE SURVEY & BUFFER VEGETATION PLAN

CAMERON POND
 WAKE COUNTY, NORTH CAROLINA

No.	Revision	Date	By

Designer	Scale	Date
AJB	AS SHOWN	08/11/08
Checked By	Job No.	
JAB	02060788.0	

Sheet No. 1